

HOW TO DEVELOP RESPONSIBLE SYSTEMS ?

The Knowledge Centre Data & Society has developed a competency model that summarises which knowledge, skills and attitudes a design team needs to have when developing technological innovations.

In this brAlnfood, we will elaborate on the added value of this competency model for your organisation, and how you can use it. Enjoy reading!

Knowledge Centre Data & Society, "How to develop responsible systems?" (2022), Brussels. This brAlnfood is available under a CC by 4.0 license.



GOAL

With the help of the competency model, you can examine **which knowledge, skills and attitudes are present** within your (design) team or your organisation, and **which competencies may need to be improved** in order to develop technological innovations in a responsible way.

AUDIENCE

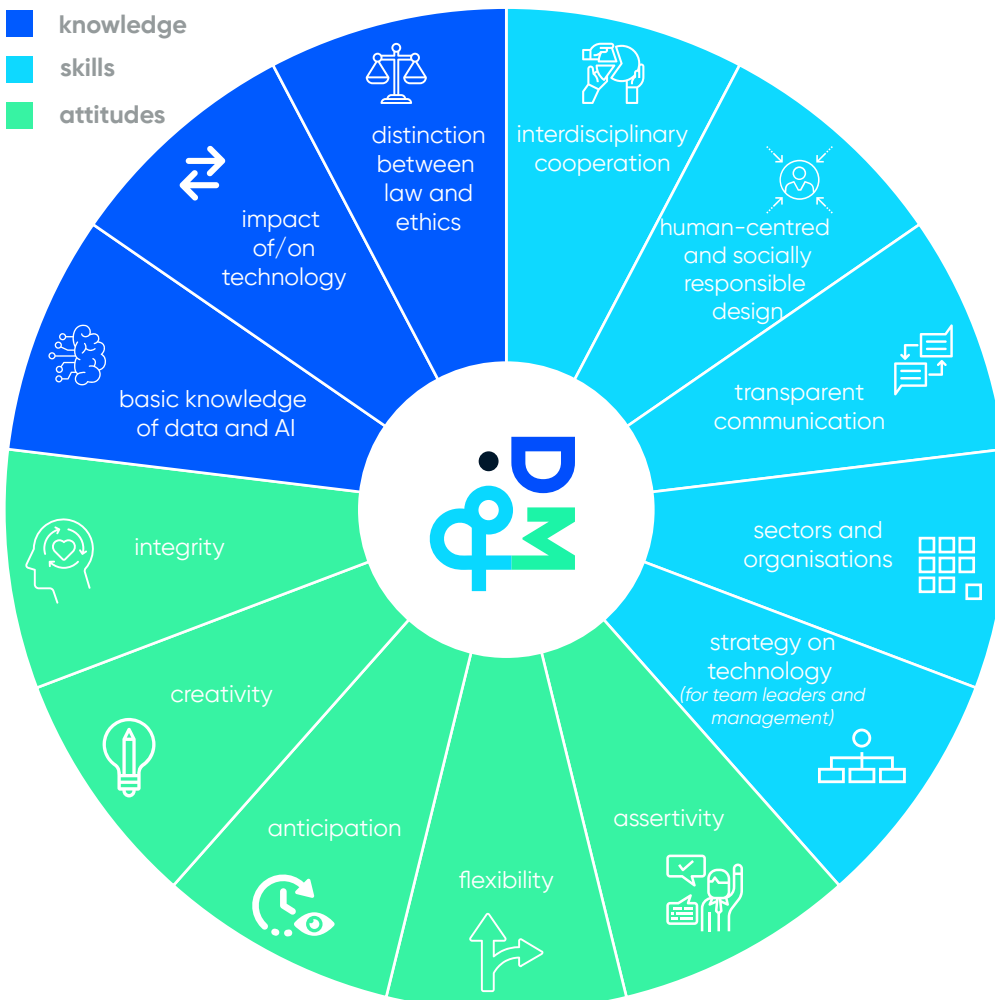
- human resources and personnel management
- team leaders

CONTENT

- three categories
- thirteen competence groups
- forty competencies

USE

- mapping knowledge and skills
- (re)training for employees
- searching for new employees
- determining additional workforce



Would you like to know more about the competency model? Are you curious how you can use it in your organisation?

Take a look at [this webpage](#), and download the explanatory document (in Dutch) with detailed information about the competency model.